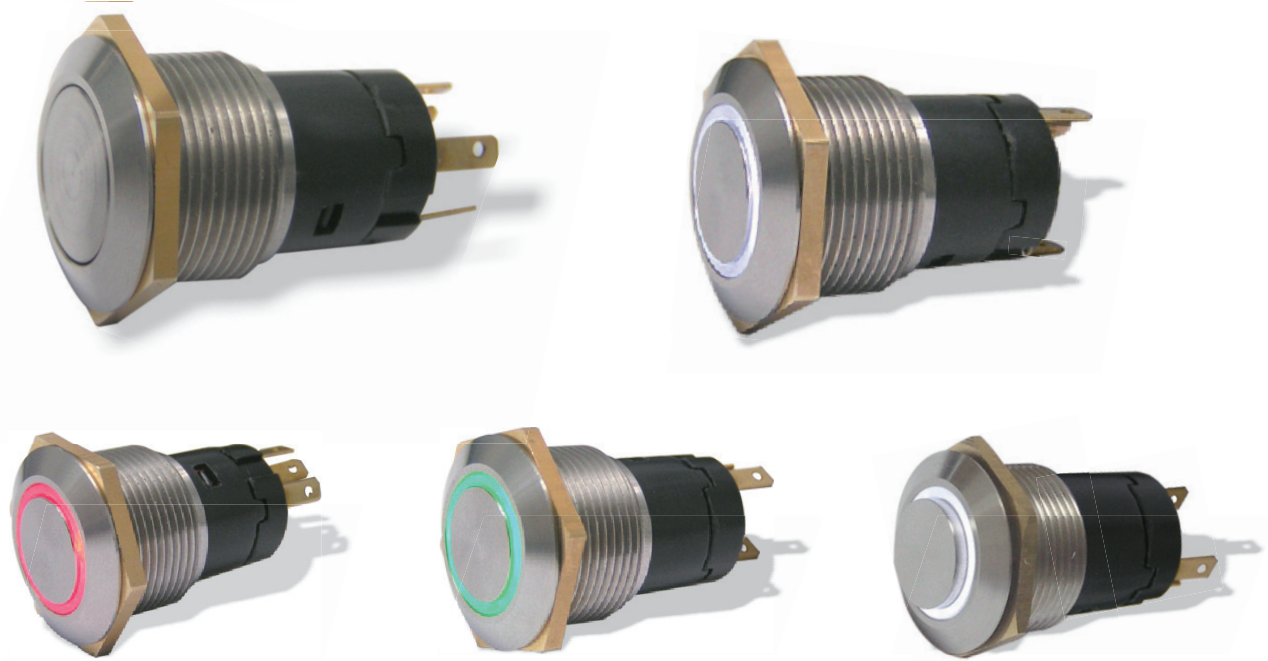


## Stainless Steel Push Button



### Specifications

Model No.	MSW-1931	MSW-1932	MSW-2531	MSW-2532	MSW-1941	MSW-1942	MSW-2541	MSW-2542
Button Type	Flat	Convex	Flat	Convex	Flat	Convex	Flat	Convex
Case Material	Stainless Steel							
Terminations	Solder Tags							
LED Voltage	DC 9~30V							
Switch Type	SPDT		DPDT		SPDT		DPDT	
Max Rating	DC 24V 2A / AC 250V 1A							
Initial Contact Resistance	<50mΩ							
Operation Temperature	-20°C~70°C							
Operation Life	1x10 <sup>5</sup> cycles							
Mounting Diameter	19mm		25mm		19mm		25mm	
Travel	1.5mm							
LED Color	--				Red/Green/Blue/Yellow/White			
Sealing(Front Panel Only)	Protection Classification IP66							

### DIMENSIONS

