

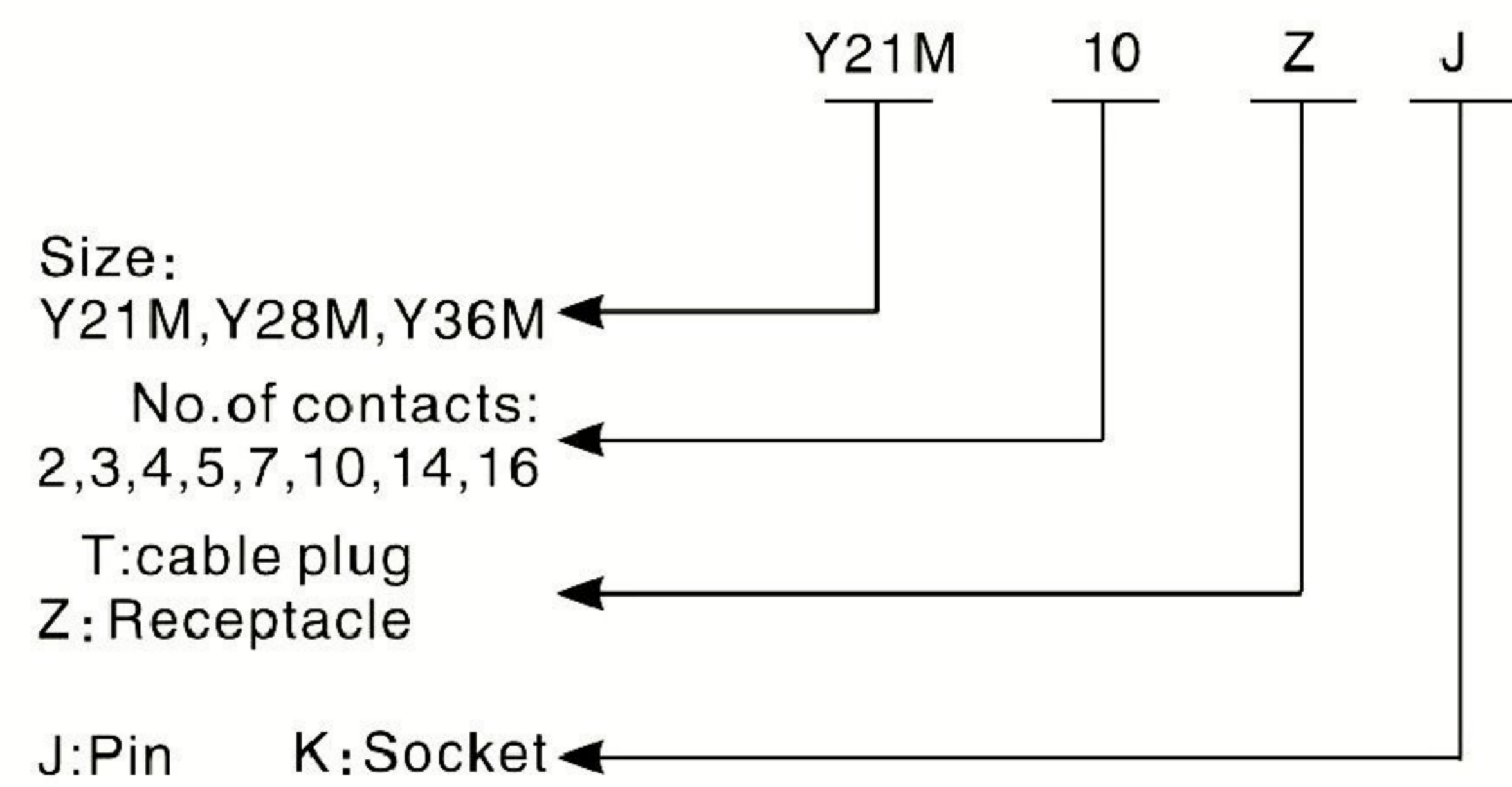
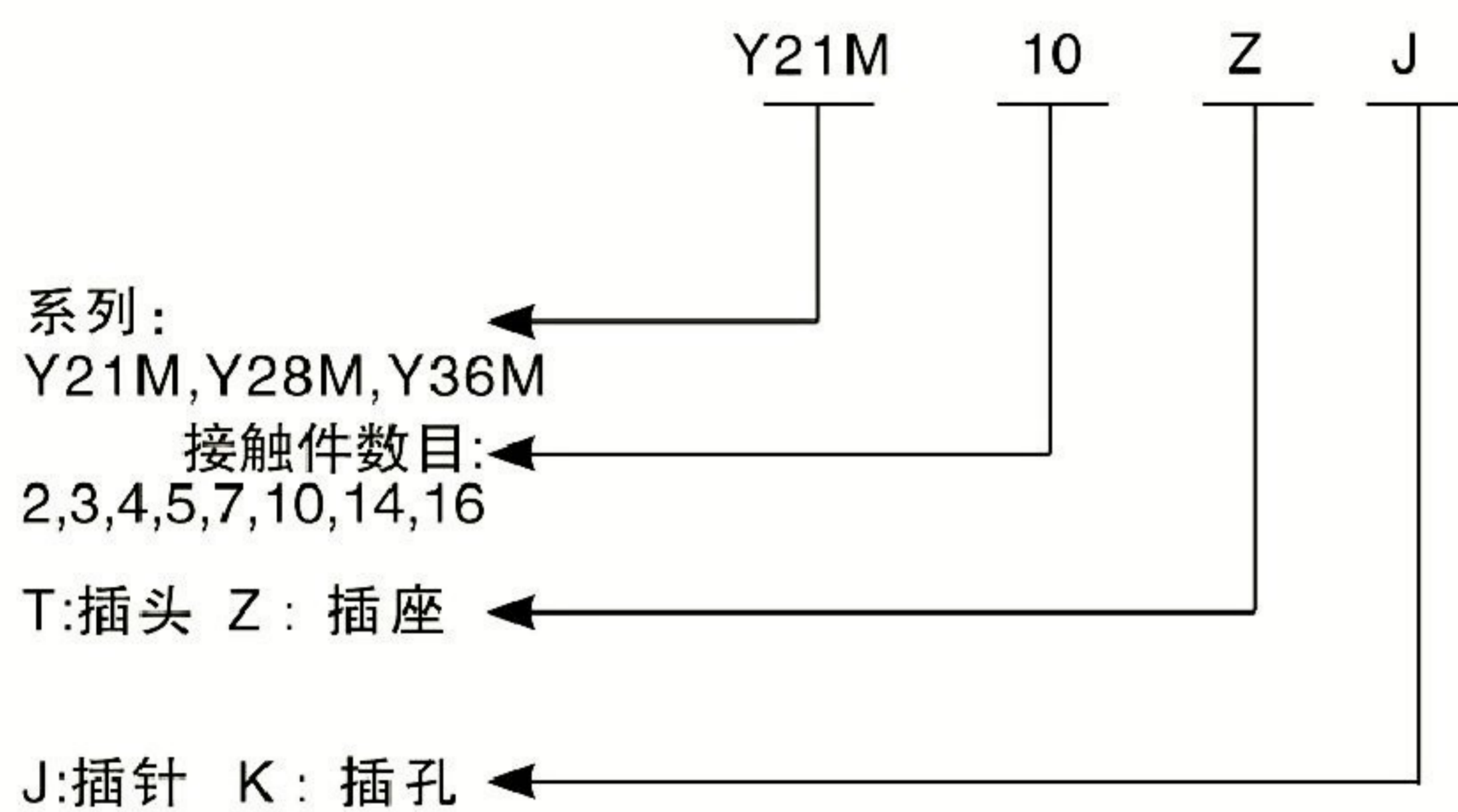
## Y 系列连接器

## Y series connector

Y系列产品有三种安装尺寸分别为21mm,28mm,36mm。不同的尺寸有不同的芯数。具有体积小、重量轻、使用方便耐插拔、导电性能佳的特点。广泛应用于适类电器设备、仪表、仪器之间的线路连接。

Y series connector include 21mm, 28mm, 36mm, different size has different poles. Y series circular connectors are widely used in line connections between electrical equipment, various instruments and meters. These connectors have the features of small volume, light weight, convenient application, high durability of plug and unplug, high conductivity and high dielectric strength.

### 命名 How to order



### 产品材料:

- 外壳:压铸铝/军绿色表面电镀
- 绝缘体:PBT塑料
- 针孔:黄铜/镀金

### Products material:

- Body:Aluminium alloy / Olive drab electroplating
- Insulator:PBT plastic
- Contacts:Gold plated over brass

### 接触电阻及额定电流

接触件规格 Contacts diameter MM	接触电阻 Contacts resistance mΩ	额定电流 Rated current A
Φ1.0	≤5	5
Φ1.5	≤3	10
Φ2.5	≤1	25

### 使用环境条件

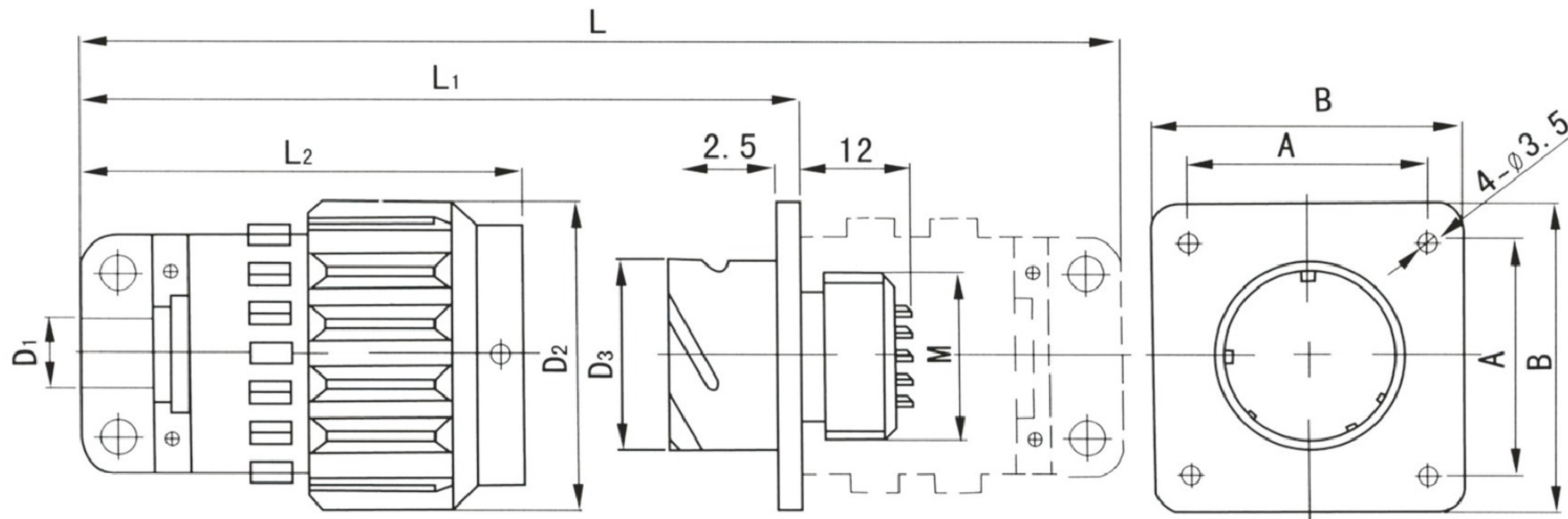
- 工作温度: -45℃~+85℃
- 工作气压: 101.33KPa~6.67Pa
- 冲击: 加速度980m/s<sup>2</sup>
- 恒加速度: 加速度245m/s<sup>2</sup>
- 相对湿度: 温度为40±2℃时, 为92~98%
- 正弦振动: 10~2500Hz 加速度196m/s<sup>2</sup>
- 碰撞: 加速度392m/s<sup>2</sup>

### Service environmental condition

- Working temperature: -45℃~+85℃
- Atmospheric pressure: 101.33KPa~6.67Pa
- Concussion: acceleration 980m/s<sup>2</sup>
- Constant speed: acceleration 245m/s<sup>2</sup>
- Relative humidity: Temperature is 40±2 degrees, Centigrade reach 92~98%
- Sine vibration: 10~2500Hz acceleration 196m/s<sup>2</sup>
- Collision: acceleration 392m/s<sup>2</sup>

# Y 系列连接器

# Y series connector



型号 Type	安装尺寸 Fixing dimension			外形尺寸 Shell dimension					
	A	D	B左	B	D <sub>2</sub>	D <sub>3</sub>	L	L <sub>1</sub>	L <sub>2</sub>
Y21M	22-24	φ 12	M21	31	φ 31	φ 22.7	79	51	45
Y28M	28	φ 18	M28	38	φ 38	φ 28.7	88	56	49
Y36M	36	φ 26	M36	46	φ 46	φ 36.7	108	67	60

芯数 No.of pin	2芯	3芯	4芯	5芯	7芯	10芯	14芯	16芯
尺寸:Size	Y21M	Y21M	Y21M	Y21M	Y21M	Y21M	Y21M	Y21M
芯数构成 Contact diameter and quantity	φ 2.5 × 2	φ 2.5 × 3	φ 2.5 × 4	φ 2.5 × 5	φ 1.5 × 7	φ 1 × 6 φ 1.5 × 4	φ 1 × 14	φ 1 × 14 φ 1.5 × 2
芯数 No.of pin	4芯	7芯	8芯	12芯	19芯	24芯	32芯	37芯
尺寸:Size	Y28M	Y28M	Y28M	Y28M	Y28M	Y28M	Y28M	Y28M
芯数构成 Contact diameter and quantity	φ 3.5 × 4	φ 2.5 × 7	φ 2.5 × 8	φ 1.5 × 12	φ 1 × 15 φ 1.5 × 4	φ 1 × 20 φ 1.5 × 4	φ 1 × 32	φ 1 × 37
芯数 No.of pin	4芯	14芯	16芯	19芯	36芯	50芯	65芯	
尺寸:Size	Y36M	Y36M	Y36M	Y36M	Y36M	Y36M	Y36M	
芯数构成 Contact diameter and quantity	φ 5.5 × 4	φ 1.5 × 8 φ 2.5 × 6	φ 1.5 × 16	φ 1.5 × 19	φ 1 × 32 φ 1.5 × 4	φ 1 × 46 φ 1.5 × 4	φ 1 × 65	